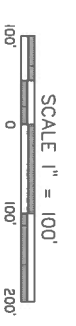


LEGAL DESCRIPTION

A tract of land in the Southwest Quarter (SW/4) of Section 15 and the Southeast Quarter (SE/4) of Section 16, Township 10 South, Range 7 East, in the City of Manhattan, Riley County, Kansas, said tract including all of Lot 1, Independence Place as recorded in Plat Book K on Page 719 and Lot 3, Ledger Stone Addition as recorded in Plat Book K on Page 752 of the Office of the Register of Deeds, Riley County, Kansas. Together with and subject to covenants, easements and restrictions of record. Said property contains .3955 acres.

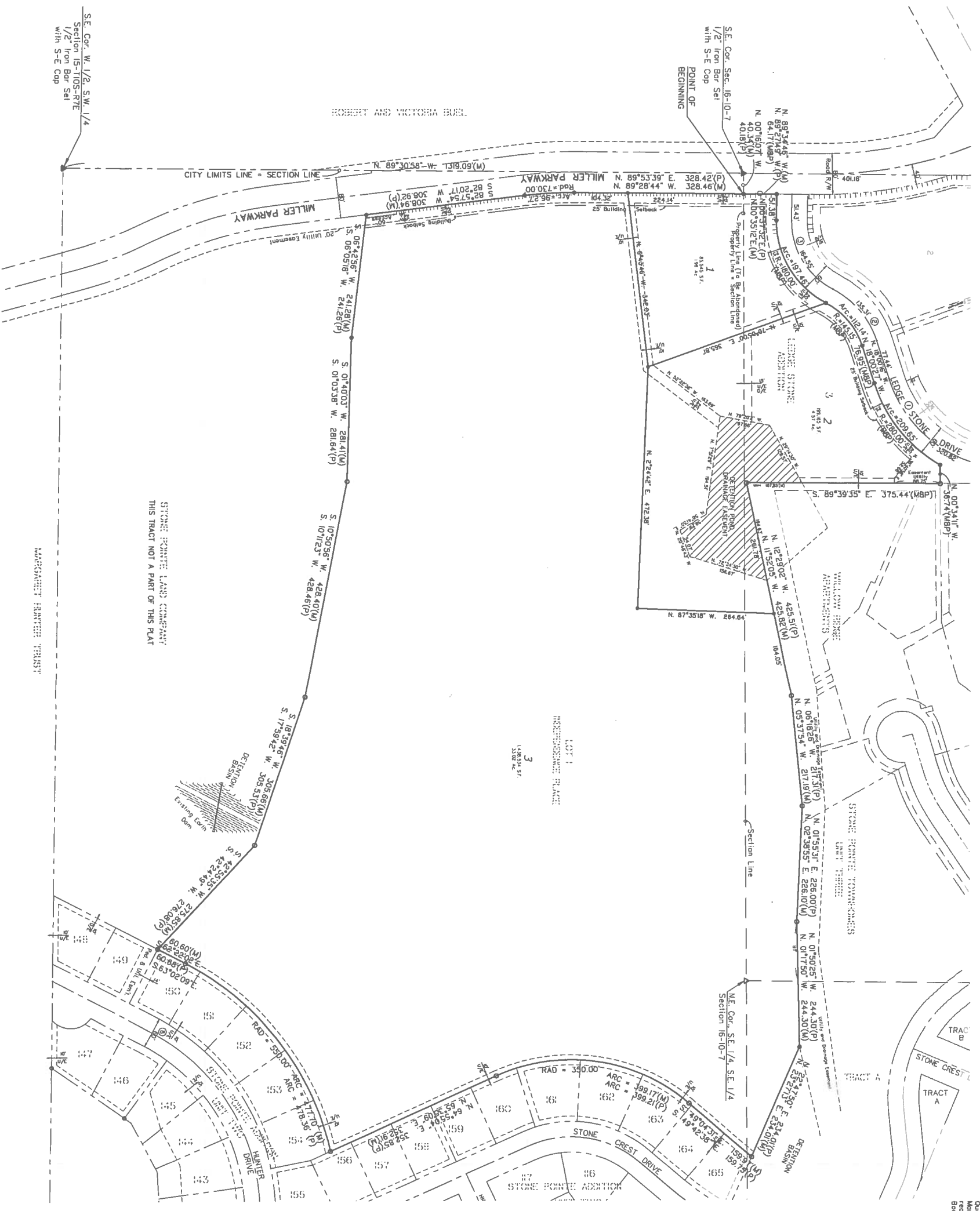
ALL BEARINGS AND DISTANCES SHOWN ON THIS PLAT ARE MEASURED, UNLESS OTHERWISE NOTED

NOTICE OF POTENTIAL IMPACT DUE TO MILITARY TRAINING: The lots within this subdivision are situated in an area that may be subject to a nearby military installation. Such conditions may include the firing of small and large caliber weapons, the over flight of both fixed-wing and rotary-wing aircraft, the movement of personnel, equipment, vehicles, military training activities. These activities ordinary and necessarily produce noise, dust, smoke and other conditions that may not be compatible with residential uses. The applicant is required to establish federal guidelines, state guidelines or both.



LEGEND

- ▲ SECTION CORNER FOUND
- SECTION CORNER SET THIS SURVEY
- ◆ 1/2" x 24" BAR WITH QLS 59 CAP SET THIS SURVEY
- 1/2" BAR FOUND IN PLACE FROM PREVIOUS SURVEY OF LEDGE STONE, STONE POINT AND WILLOW RIDGE SURVEY POINT NOT SET
- CURVE DATA
- EASEMENT LINE
- 25' BUILDING SETBACK LINE
- ||||| NO ACCESS
- MEASURED DISTANCES
- (P) PLATTED DISTANCES



STONE POINT LAND COMPANY
THIS TRACT NOT A PART OF THIS PLAT

MANHATTAN PLATTEE 757457

SE. Cor. W. 1/2, SW. 1/4
Section 15-T10S-7E
1/2" Iron Bar Set
with S-E Cap

A REPLAT OF LOT 3, LEDGE STONE ADDITION, LOT 1, INDEPENDENCE PLACE

**LEDGESTONE
RIDGE
UNIT ONE**

AN ADDITION TO THE CITY OF MANHATTAN,
RILEY COUNTY, KANSAS



PREPARED BY
Schwab Eaton
CONSULTING ENGINEERS - LAND SURVEYORS - LANDSCAPE ARCHITECTS
1125 GARDEN WAY MANHATTAN, KANSAS PH 785-539-4887
APRIL 2016