

CENTERLINE CURVE DATA

R	L	T	CD	CB
250.03'	320.82'	186.76'	299.26'	N.53°49.50'W.
173.14'	135.31'	71.23'	131.97'	N.40°08.04'W.
150.00'	164.55'	91.66'	156.42'	N.30°50.91'W.
250.00'	78.20'	39.42'	77.88'	N.15°59.48'W.
250.00'	119.42'	60.87'	118.29'	N.11°16.23'W.
400.00'	177.84'	90.42'	176.36'	N.15°08.55'E.
400.00'	93.09'	46.76'	92.88'	N.21°10.6'E.
400.00'	85.81'	43.07'	85.65'	N.56°15.2'E.

NOTICE OF POTENTIAL IMPACT DUE TO MILITARY TRAINING: The lots within this subdivision are situated in an area that may be subject to a nearby military installation. Such conditions may include the firing of small and large caliber weapons, the over flight of both fixed-wing and rotary-wing aircraft, the movement of personnel, the presence of military training facilities, these activities ordinary and necessary produce, noise, dust, smoke and other conditions that may not be compatible with the use of the property. The applicant has established federal guidelines, state guidelines or both.



SCALE 1" = 100'



LEGEND

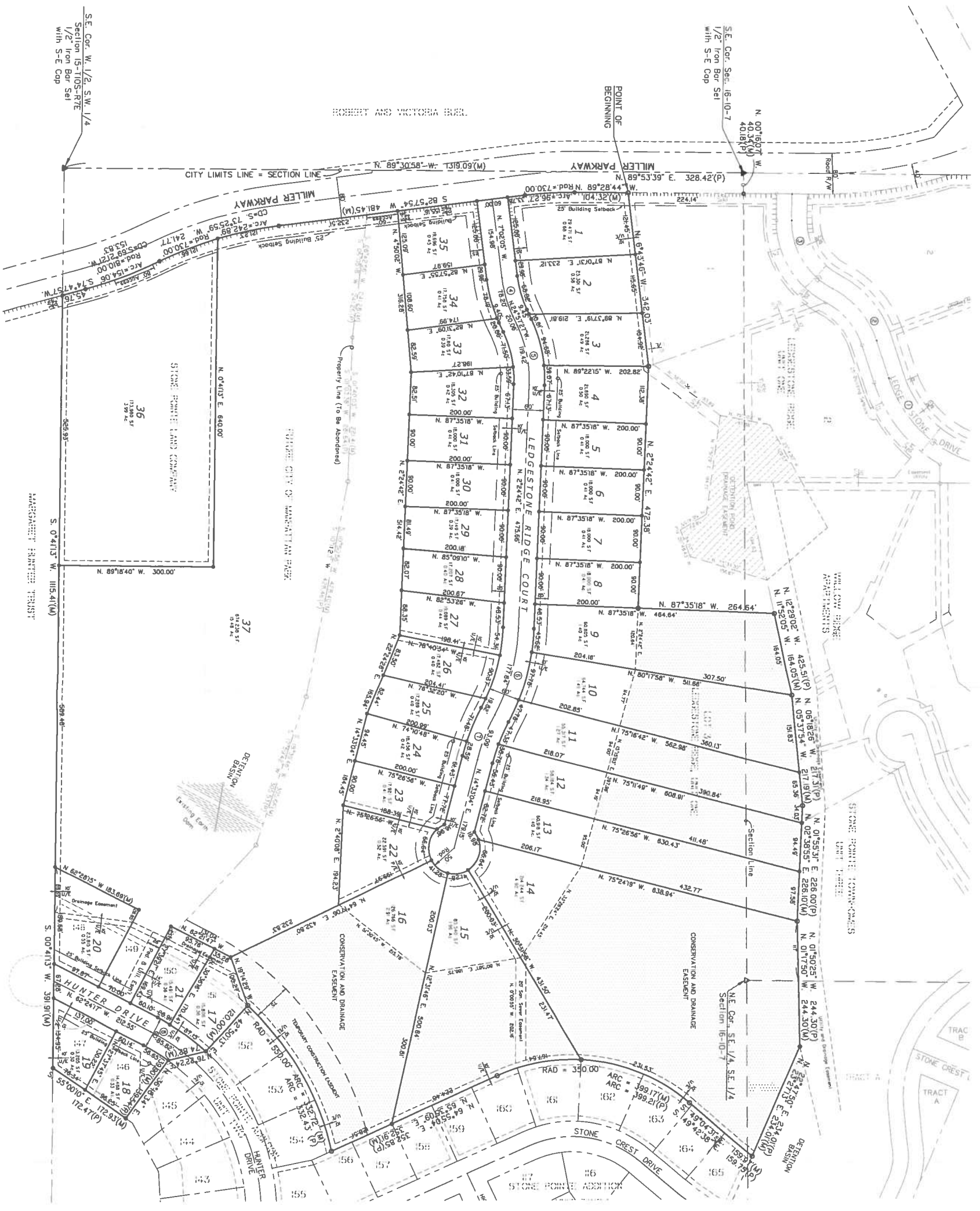
- ▲ SECTION CORNER FOUND
- SECTION CORNER SET THIS SURVEY
- ▲ 1/2" x 24" BAR WITH CLS 58 CAP
- SET THIS SURVEY
- 1/2" BAR FOUND IN PLACE FROM PREVIOUS SURVEY OF LEDGESTONE RIDGE DRIVE AND WILLOW RIDGE
- SURVEY POINT NOT SET
- SURVEY DATA
- EASEMENT LINE
- 25' BUILDING SETBACK LINE
- NO ACCESS
- MEASURED DISTANCES
- PLATTED DISTANCES

LEDGESTONE RIDGE UNIT TWO

AN ADDITION TO THE CITY OF MANHATTAN, RILEY COUNTY, KANSAS



CONSULTING ENGINEERS - LAND SURVEYORS - LANDSCAPE ARCHITECTS
1125 GARDEN WAY
MANHATTAN, KANSAS PH 785-539-4887
APRIL 2016



SE. Cor. W. 1/2, S.W. 1/4
Section 15-T10S-R7E
1/2" Iron Bar Set
With S-E Cap

SE. Cor. Sec. 16-10-7
1/2" Iron Bar Set
With S-E Cap

MANHATTAN PLATTING TRUST